

F60



F60 Modular System

Adapteo.

The F60 module meets high international standards. It is characterised by modern design, where function, fire safety and low energy consumption have been key elements in our development work.

General description

Quality

Adapteo AB is quality certified according to ISO 9001. The manufacturing of modules and accessories takes place indoors in a controlled environment. Manufacturing, setup and service comply with Adapteo's quality system. The draft control plan is drawn up by Adapteo.

Environment

Adapteo AB is quality certified according to ISO 14001.

Conservation of resources

The modular system is designed for low energy consumption with good thermal insulation and impermeability, and a high degree of heat recovery with heat exchangers in the ventilation system. Renewable raw materials are prioritised in the choice of materials. Industrial production minimises the amount of material spillage.

Environmental impact

The high degree of prefabrication and portability means that the quantity of residual products is minimised over the service life of the building. Recyclability is prioritised in the choice of materials with the aim of minimising harmful environmental impact. Residual products in connection with manufacturing and setup are separated.

Colours

Exterior

Graphite grey, RAL 7024

Interior door

Walls: fibreglass wallpaper, white

Floor: grey

Ceiling: white

Flooring

Living room and toilet/bathroom:
Tarkett PVC mat, 1.5 mm, grey

Bathroom

Shower, toilet, washbasin with hot and cold water, electric towel radiator.

Kitchenette

Refrigerator (132 L) with freezing compartment, hot and cold water, washbasin, microwave, cupboard and shelves.

Technical specification

Heating

The module is heated with electric radiators

Electrical installation

400V, 3 phases and 230V inside. Nibe boiler, 35 litres. With fire alarm and cable TV support.

Lighting

Light fixtures with LED spotlights in the ceiling. Outside there is an LED lamp at the entrance door.

Ventilation

Ventilation system with moisture control in the bathroom. Heat recovery in the living room; Fan type Mitsubishi VL-100.

Fire safety

Ceiling structure: Fire class REI 60

Wall structure: Fire class REI 60

Loads

Wind: 0.50 kN/m²

Floor: 2.00 kN/m²

Roof: 2.20 kN/m²

U-values

Wall structure:

Rockwool 180 mm: 0.23 W/m²K

Floor framework:

200 mm PU: 0.12 W/m²K

Ceiling structure:

Rockwool 250 mm: 0.15 W/m²K

Structural parts

With the fire-proof design and the static calculations of our F60 modular system, it is possible to build up to two floors of fire class REI 60.

Window

Openable window with exterior roller blinds. U-value = 1.0 W/m²K

Exterior door

PVC door, 1,100 x 2,100 mm

U-value = 1.0 W/m²K

Interior door

Wooden door, 800 x 2,100 mm

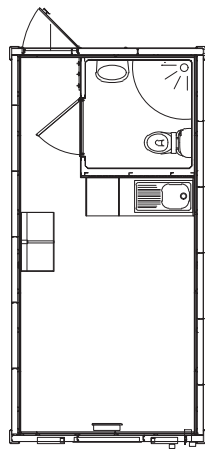
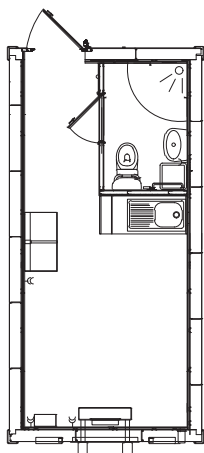
Door frame

Door frame in standard white

Area	18 m²
Length	6,055 mm
Width	2,990 mm
Height	3,100 mm
Height, interior	2,500 mm
Weight	4.8 tonnes
Façade	Steel



Modulyper



Residential module F60
Standard design for 18 m² home, 1 or 2 beds

Adapteo – a unique partnership

Adapteo offers a simple and easy way for you to rent the extra space you need. Whether it is a matter of more space for the smallest children, for school-children of all ages, for employees in the office or for living quarters, Adapteo always has a solution.

Our modular systems are not only suitable for expansion, but also extremely suitable for flexible and creative interior design solutions to meet your particular needs.

Adapteo is available in the following countries:
Denmark, Finland, Sweden, Norway and Germany.

ADAPTEO AB

PO Box 4080 | SE-169 04 Solna
+46 (0)8-590 994 40 | info.se@adapteo.com
adapteo.se

Adapteo.